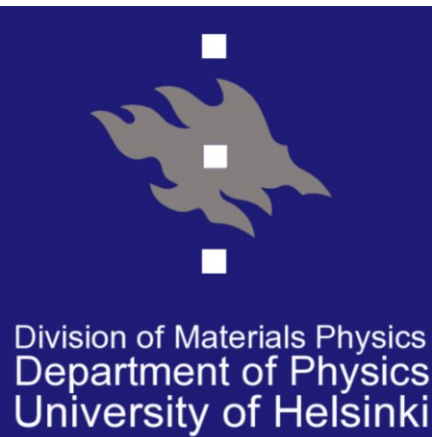


# X-ray scattering study on the structure and dynamics of never-dried Silver birch and green European aspen

K. Leppänen, M. Peura, K. Pirkkalainen,  
A. Kallonen, I. Bjurhager\*, R. Serimaa  
[kirsi.leppanen@helsinki.fi](mailto:kirsi.leppanen@helsinki.fi)

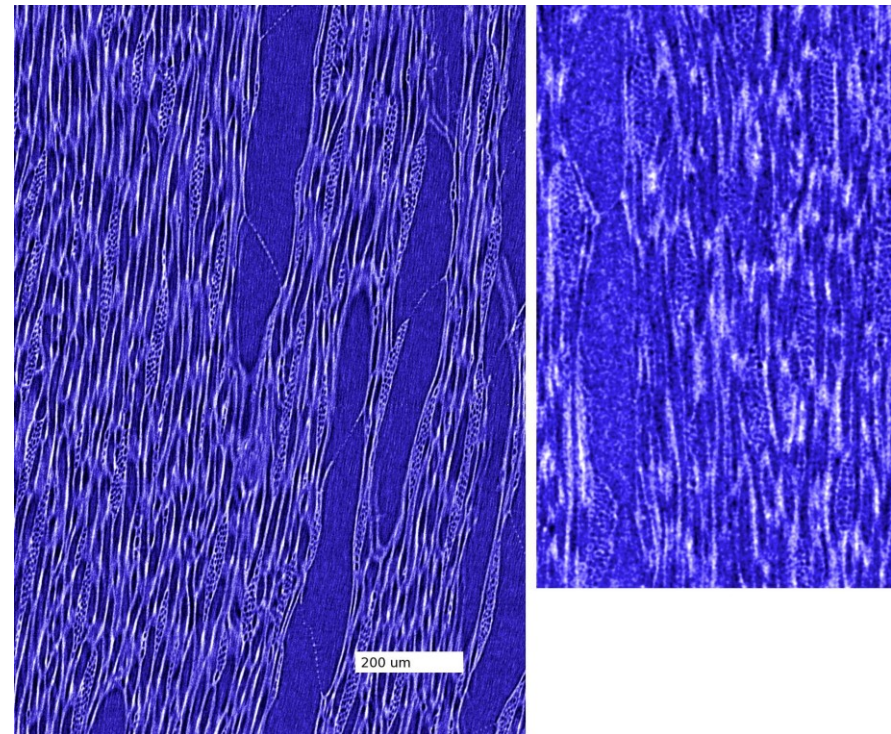
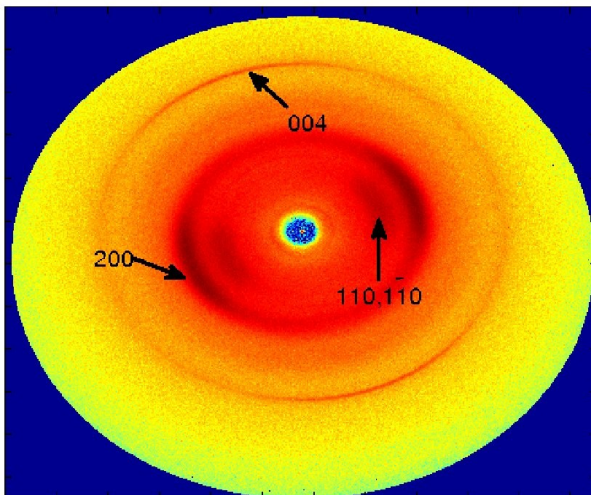


University of Helsinki  
\*Royal Institute of Technology



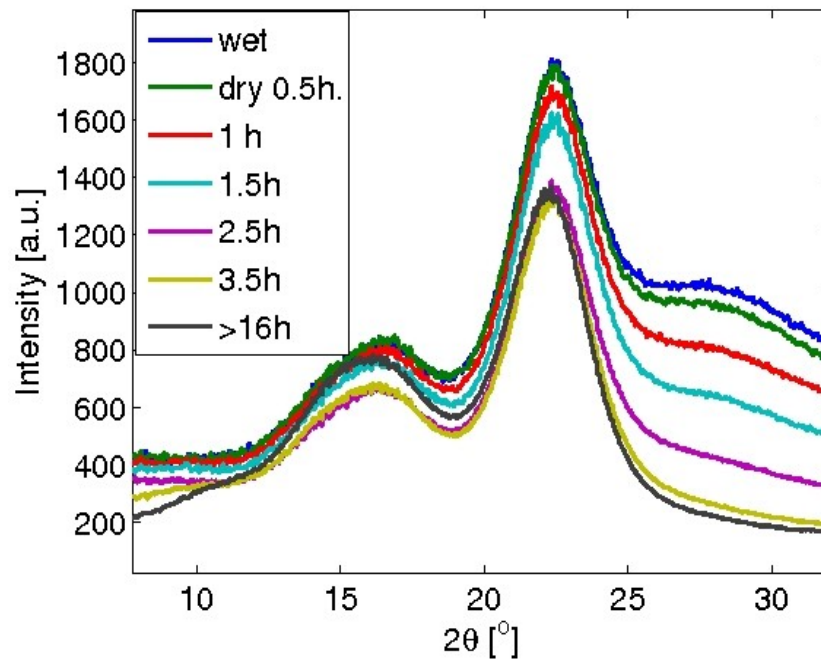
# Methods

- Wide-angle x-ray scattering (WAXS) in situ during drying and tensile test
- Small-angle x-ray scattering (SAXS) in situ during drying
- X-ray microtomography



# Results

Deformations of the crystallites by WAXS



Packing of the microfibrils by SAXS

