

# Ultrasonic Scanning to Determine the Influence of the Environment on Radial Profiles of Longitudinal Stiffness of Sitka spruce

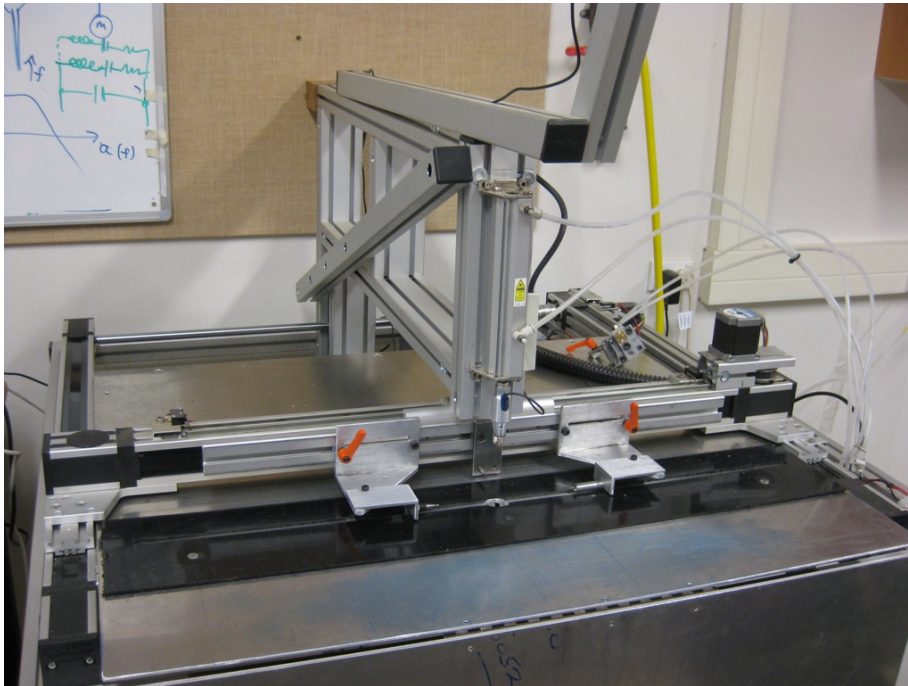
*Steven Adams*

*steada@chem.gla.ac.uk*

*School of Chemistry, University of Glasgow*

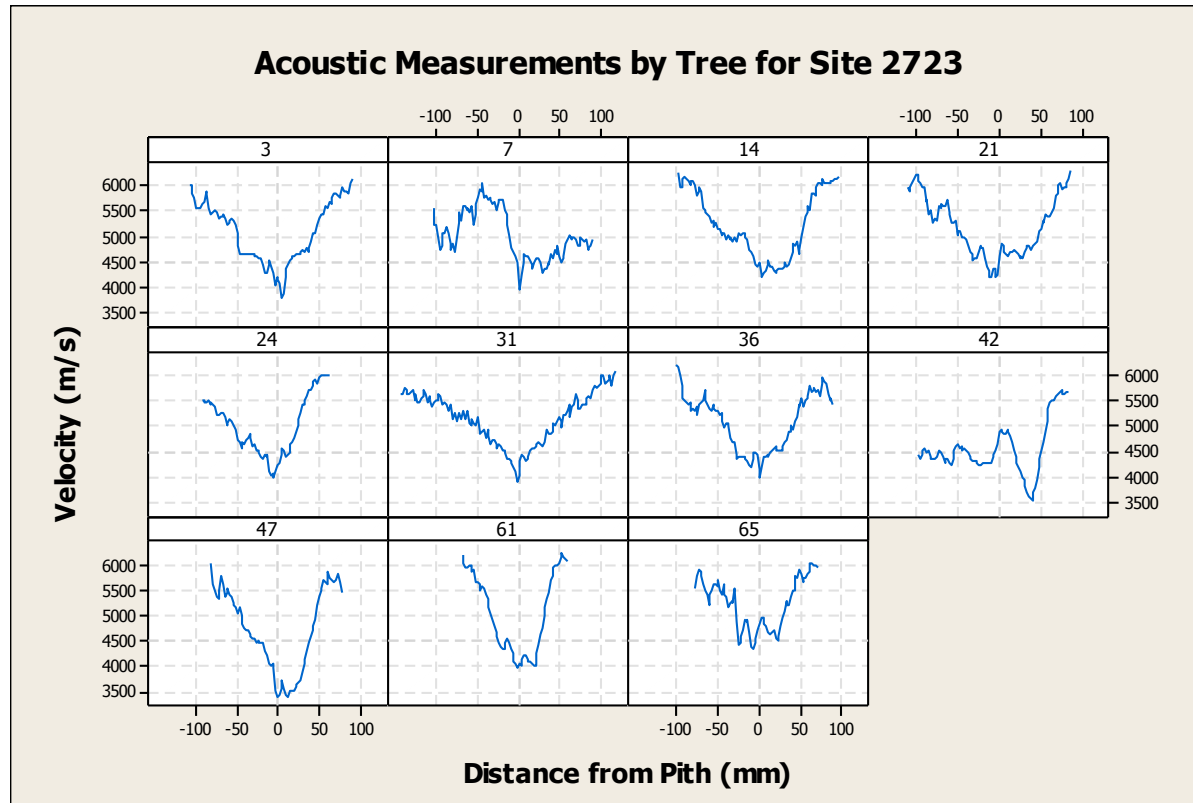
Funding for this short term scientific mission to Christchurch, New Zealand was provided by Cost FP0802

## Method



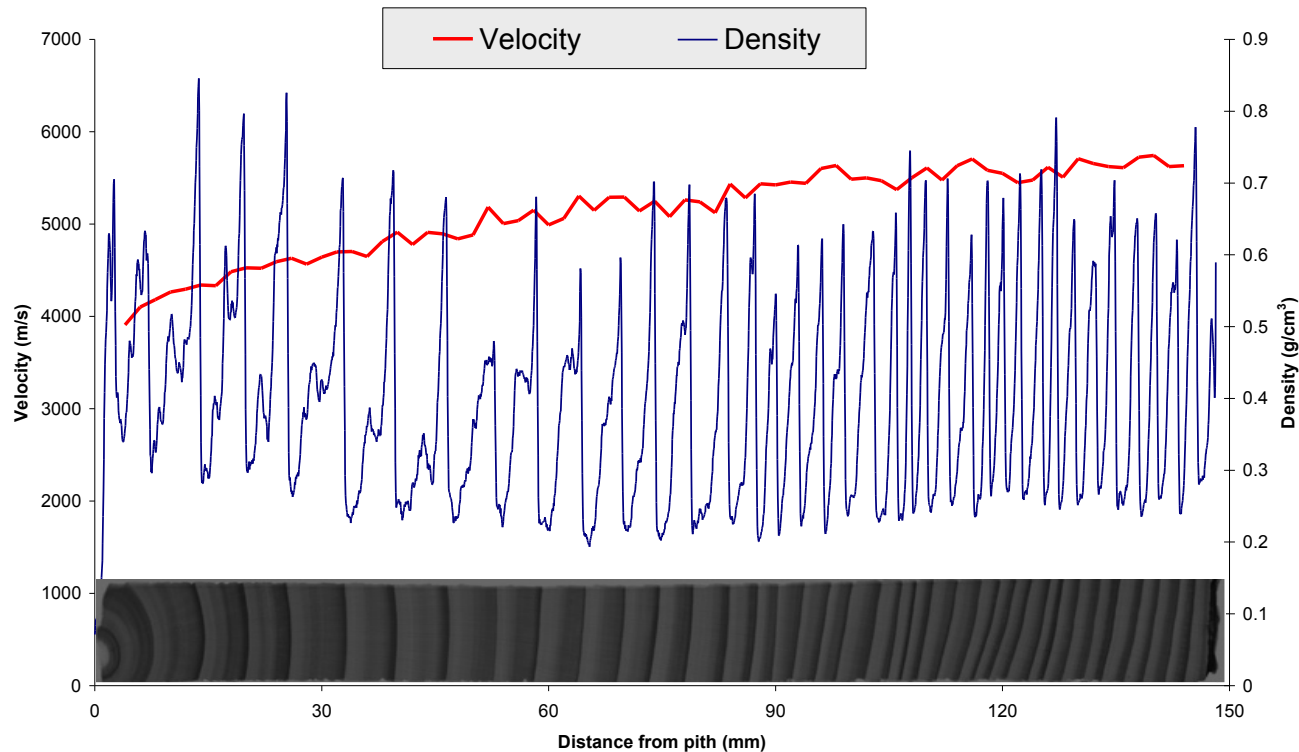
Ultrasonic Scanner at University of Canterbury, Christchurch New Zealand

# Results



The radial profile of acoustic velocity for 11 core samples from one site

## Results



Pith to bark acoustic velocity and density profiles for one tree. Also shows the matching Itrax x-ray scan of the core